

# You are invited to a Consultation on the Vision for Colney Hall

7<sup>th</sup> and 8<sup>th</sup> February 2011, 2.30-7pm



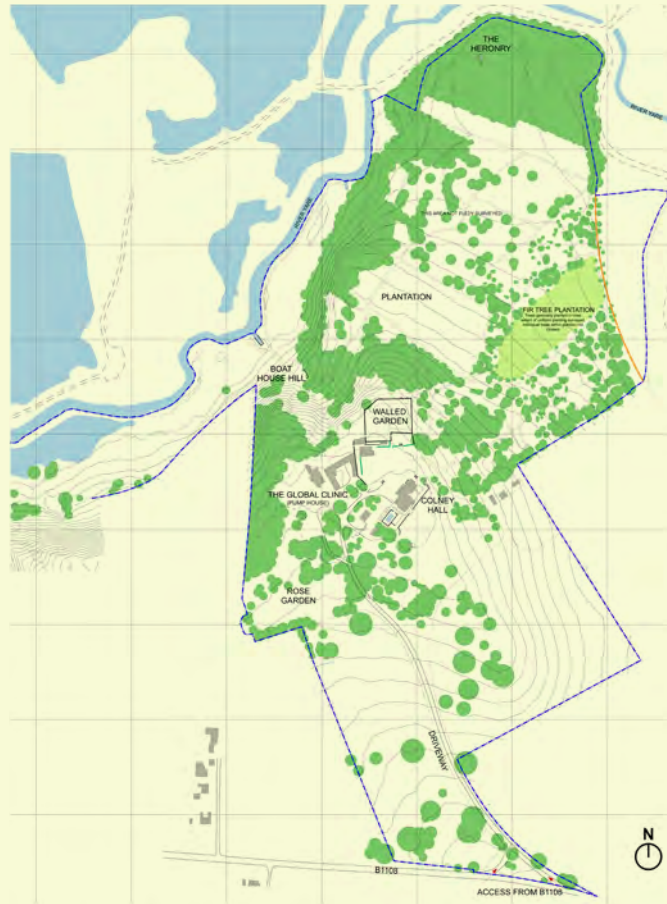
Photo copyright Google

The Vision for the Colney Hall estate is to create a world class campus of Health and Research activities on this unique site in the Norwich Research Park which will be complementary to the other uses on sites elsewhere in the Park.

You are invited to view the early proposals and make comment either at the viewing or at [colneyhall@LSIarchitects.co.uk](mailto:colneyhall@LSIarchitects.co.uk)

The exhibition will be open at Colney Hall from 2.30-7pm on 7<sup>th</sup> and 8<sup>th</sup> February 2011.

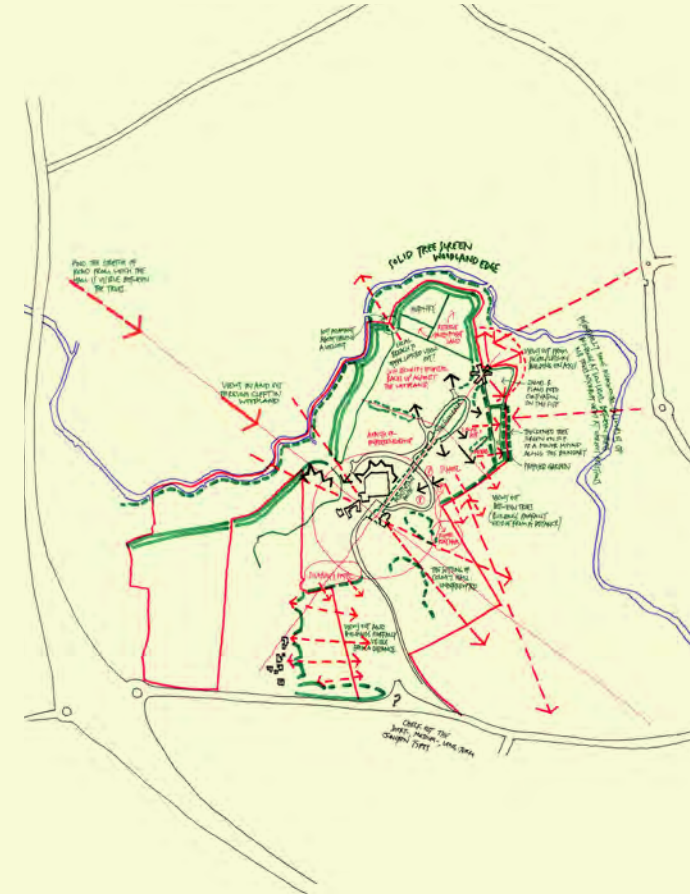
## Existing Site



The site of 29 hectares is accessed by its own driveway from the B1108 Watton Road. It is bounded to the West partly by the River Yare and partly by adjoining parkland, to the North and East by the River Yare and adjoining farmland and to the South by the Watton Road.

Colney Hall is divided broadly into two landscape areas - those more open parkland areas in the southern part of the site and denser woodland to the north.

## Concept



- Historic core: Hall, Walled Garden, Pump House and Rose Garden
- Open parkland facing south
- Trees and perimeter planting to the north
- Sustainability
- Exemplar design
- Axes
- Mandala
- Frontages



## The Vision



The masterplan is for a world class campus of Health and Research buildings to complement the facilities elsewhere in the NRP and the NNUH.

- Open parkland to the south
- Existing buildings extended in the historic core
- New buildings set in woodland glades to the north with the boundary protected by tree screening
- The informality of the historic core linked by a strong new axis to the new 'mandala' which provides a central feature to the north part of the site
- Enhancing the landscape and biodiversity within the site

## Early Thoughts and Images



The nearby Woodland Burial Site has an established aesthetic with the use of timber and the masterplan seeks to continue with appropriate development in timber for buildings, where appropriate.

The idea is to use timber more comprehensively in the perimeter buildings which face out of the site, while other materials will become more dominant towards the centre of the site.

## Early Thoughts and Images



## How To Get There



Please let us have your thoughts on these proposals, either in the comments book at the exhibition or at [colneyhall@LSIarchitects.co.uk](mailto:colneyhall@LSIarchitects.co.uk) by 15<sup>th</sup> February 2011.

